

The Children's Link Society

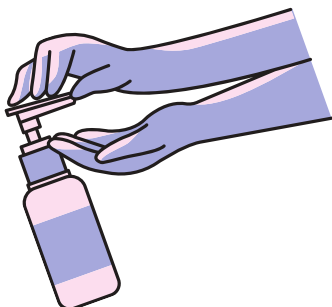
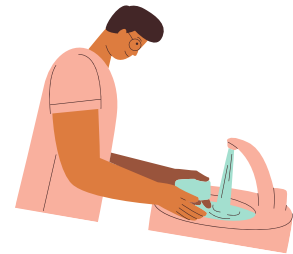
**Question Guide for
Programming and Supports
During Phase 2 of Alberta's
Relaunch Strategy**

Questions To Ask Service Providers/Supports During Phase 2

Beginning June 12th, Phase 2 of Alberta's Relaunch Strategy will start, allowing more businesses & services in the province to start opening up and allowing slightly larger events and gatherings to take place. Businesses must ensure they have health & safety measures put in place in order to do so. With restrictions, some of the services that may be able to open up include K-12 schools, libraries, pools, and indoor recreation.

As Alberta opens up again, many families have questions about if it is safe to send their child to programming, have a respite worker work with their child, or have school support in the home.

On the following pages, we have included some questions to consider asking agencies and supports when making these decisions.

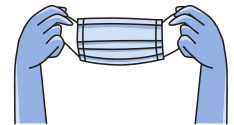


Questions To Ask Service Providers/Supports During Phase 2

For Agencies

Health & Safety

- Has the agency outlined a health & safety plan for how they plan to keep their clients & staff safe?
- What sanitation measures is the agency taking? How often is the space, bathrooms, frequently touched objects, and/or equipment being sanitized?
- Will staff be wearing personal protective equipment (PPE)? What PPE is required of staff (masks, gloves, etc.)?
- Will there be hand sanitizer and soap & water widely available for clients & staff? Will staff be promoting frequent hand washing?



Staff Wellness

- What is the agency's sick policy? Are staff required to stay home if they are feeling unwell?
- Are employers checking in with staff to see how they are feeling before each shift?
- Are staff working in two different agency spaces? Are staff working more than one job with multiple clients?



Number of People & Physical Distancing

- How many people is this agency working with directly at a time? If it is a summer camp or program, how many children/youth will be joining?
- Does the agency have physical distancing measures in place? If not or if it is not possible, how are they planning to ensure your child's health & safety?



Questions To Ask Service Providers/Supports During Phase 2

For Individuals and Supports

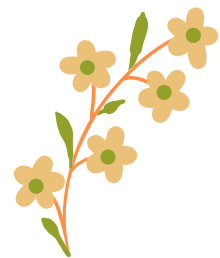
Health & Safety

- What steps is the individual planning on taking in order to keep themselves and your loved one safe?
- Is the individual planning to wear personal protective equipment (PPE), such as masks & gloves? Will you require them to wear and/or provide them with PPE?
- Discuss worker expectations on hand washing before arriving, throughout the shift, and after sneezing/coughing.
- Discuss worker expectations on promoting hand-washing with your child and hygiene/safety outside of the house.



Staff Wellness

- Have you and the worker discussed what the plan is if the worker or family member becomes ill? Does the worker plan on staying home and informing the family if they become ill?
- Will you be planning to check in with the worker on how they are feeling before each shift? What will that look like? (see page 5 for resources)



Physical Distancing

- How many respite workers/supports do you plan on having in your home? How many individuals is each respite worker/support working with outside of the home?
- Will the individual/support be practicing physical distancing and following health & safety advice outside of your home?



Helpful Links & Resources

Below are some helpful resources for you and your family to check out related to Alberta's Relaunch Strategy and keeping safe and healthy during this time.

Alberta Health Services:

For more information on Alberta's Relaunch Strategy, please visit:

<https://www.alberta.ca/alberta-relaunch-strategy.aspx>

For more information on preventing the spread, please visit:

<https://www.alberta.ca/prevent-the-spread.aspx>

AHS COVID-19 Self-Assessment

<https://myhealth.alberta.ca/journey/covid-19/Pages/COVID-Self-Assessment.aspx>

Personal Protective Equipment (PPE) Information:

Non-medical mask information:

<https://www.alberta.ca/assets/documents/covid-19-guidance-for-wearing-non-medical-masks.pdf>

Choosing the right non-medical mask for wearing in public:

https://www.youtube.com/watch?v=J_hds5pOdyU&feature=emb_title

How to use a non-medical mask:

https://www.youtube.com/watch?v=6MojzHFStNs&feature=emb_title

Wearing a mask for children

<https://www.teacherspayteachers.com/Product/Wearing-A-Mask-Story-for-Children-5463572?fbclid=IwAR3wxZW-S0fyWkvo4OmSS3E-yaE3ezt1tfzMnvKlbfOEAJ-ceBvLIGFD1V4>

COVID-19 Information for Kids




Coping with COVID- Sesame Street

<https://autism.sesamestreet.org/coping-with-covid/>

AHS Kids Questions about COVID-19 (Part 1, 2, & 3)

<https://www.youtube.com/watch?v=jxS2NoXR7To>



 @ChildrensLink  @ChildrensLink  @childrenslink